

1.1 and 1.2 Attempt #3

1. Use benchmarks to estimate each square root.

a. $\sqrt{5.6}$

b. $\sqrt{\frac{6}{11}}$

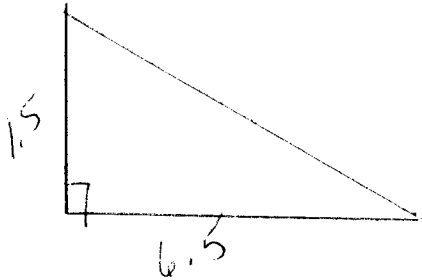
2. Which decimals and fractions are perfect squares? Explain your reasoning.

a. $\frac{9}{64}$

b. 3.6

c. $\frac{6}{9}$

3. In the triangle below, determine the unknown length.



4. Find a decimal that has a square root between this pair of numbers.

a. 7 and 8